



TSX-V: SKYG | US: SRKZF

NOVEMBER 2023 INVESTOR PRESENTATION



ONTARIO NICKEL PORTFOLIO

SHEBANDOWAN GREENSTONE BELT, CANADA



TSX-V: SKYG

US: SRKZF

The Ontario Nickel portfolio consists of 2 nickel-copper-cobalt-platinum group element properties, situated in the Shebandowan Greenstone Belt, in northwestern Ontario. **The properties are located proximal and in a similar geologic setting as to that of the past-producing Shebandowan Ni-Cu-Co-PGE deposit, mined by Inco Ltd., during the period of 1970 to 1998.**

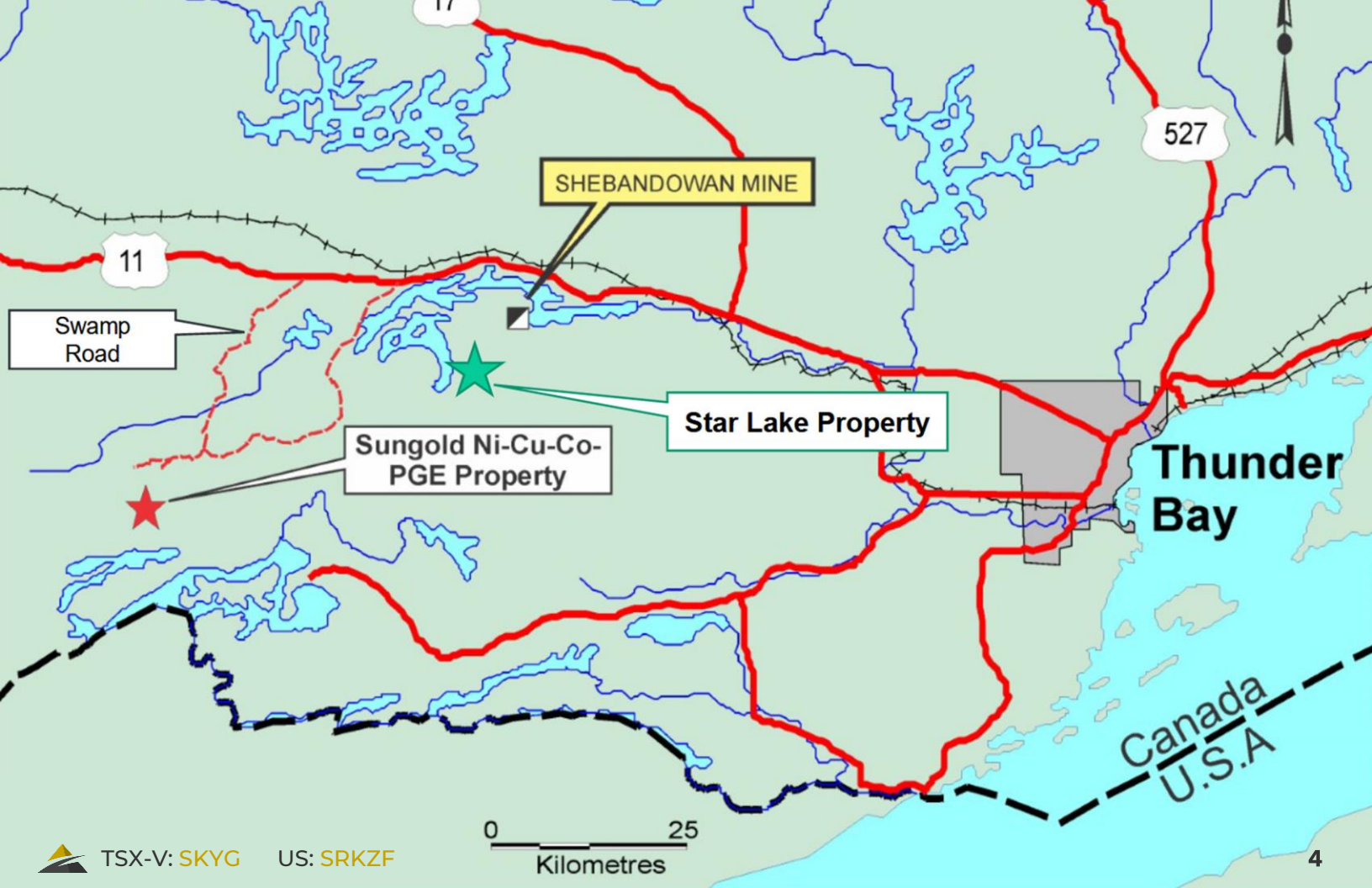


Historic Photo of the Shebandowan Ni-Cu-PGE Mine Headframe and Mine site



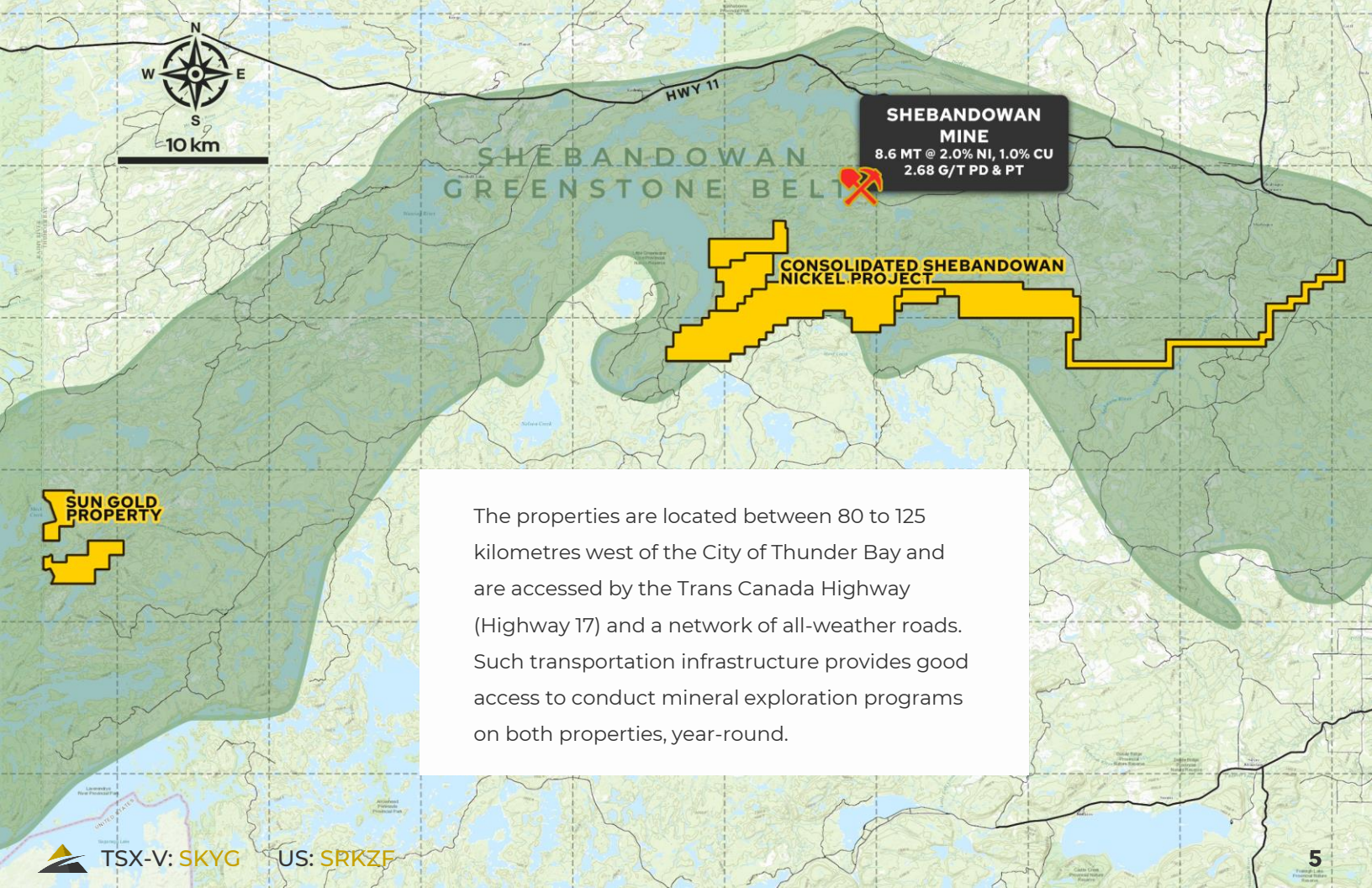
TSX-V: **SKYG**

US: **SRKZF**



TSX-V: SKYG US: SRKZF

0 25
Kilometres



The properties are located between 80 to 125 kilometres west of the City of Thunder Bay and are accessed by the Trans Canada Highway (Highway 17) and a network of all-weather roads. Such transportation infrastructure provides good access to conduct mineral exploration programs on both properties, year-round.



TSX-V: **SKYG**

US: **SRKZF**

COMPELLING COMPARISONS

WITH THE HISTORIC SHEBANDOWAN NI-CU-CO-PGE MINE

The Shebandowan Ni-Cu-Co-PGE mine of Archean-age comprises a world-class example of a premier magmatic nickel sulphide deposit, with mined reserves of 8.6 MT at a grade of 2.0% Ni, 1.0% Cu and 2.68 g/t Pt and Pd (cobalt grades unknown). The model for mineralization at the Shebandowan deposit invokes:

Greenstone belt deposition in a rifted setting - deep sub-vertical penetrative faults tapping the mantle should be present in the exploration area

Vertical ultramafic intrusions or sill complexes host Ni sulphide ore as conduits, proximal to the deep faults

Late mafic dykes within the ultramafic environment indicate extended magmatic activity within the conduits

Strong magnetic expression and conductivity of the Ni sulphide orebodies due to serpentinization (magnetite) of host ultramafic rocks and presence of pentlandite, pyrrhotite and chalcopyrite as Ni sulphide minerals

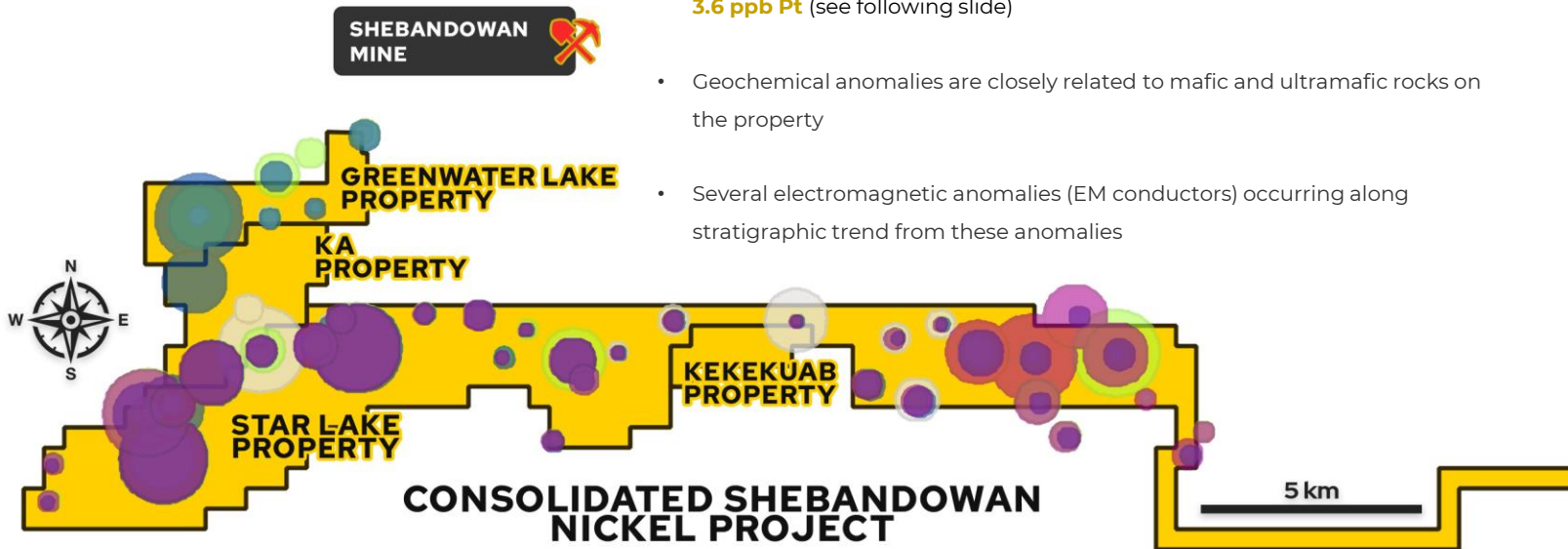


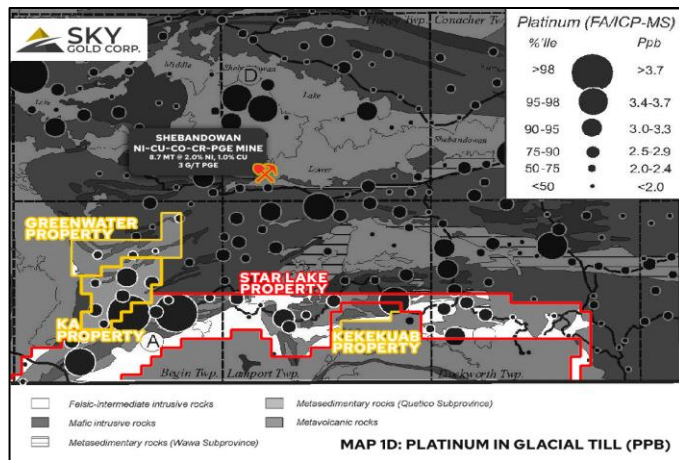
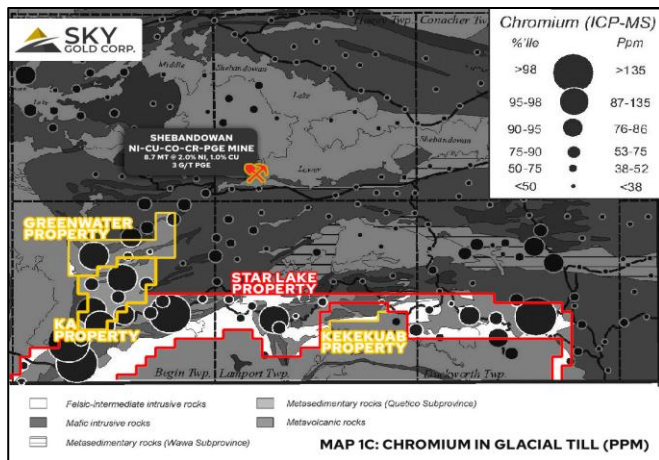
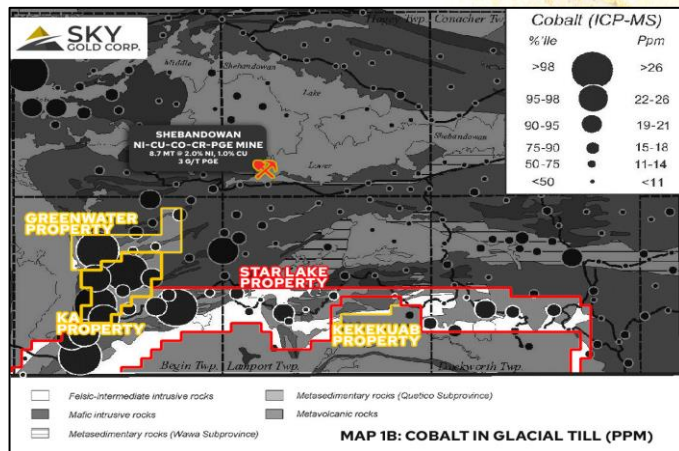
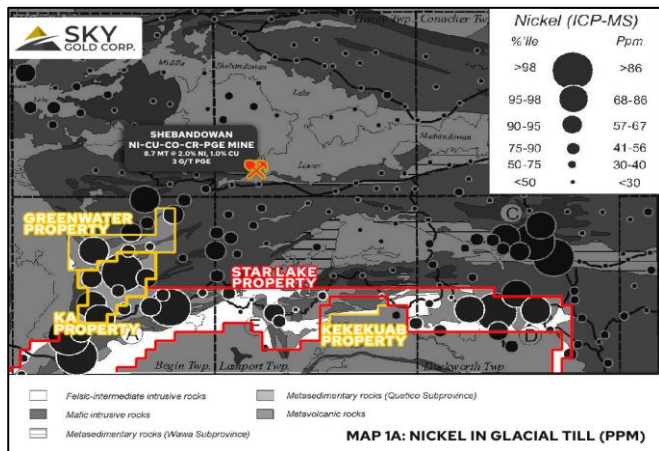
GLACIAL-IN-TILL SAMPLES

- Nickel (ICP-MS) <30 - >86 ppm
- Cobalt (ICP-MS) <11 - >26 ppm
- Chromium (ICP-MS) <38 - >135 ppm
- Platinum (FA/ICP-MS) <2.0 - >3.7 ppb

The Consolidated Shebandowan Nickel Project Ni-Co-Cr-PGE property comprises approx. 7,380 ha and is situated 60 km west of Thunder Bay in Northwestern Ontario. Highlighting the exploration opportunity on the property includes:

- A cluster of strongly in-glacial till geochemical anomalies, delineated by an Ontario Geological Survey investigation of the Shebandowan greenstone belt (Bajc 2000) with values up to **345 ppm Ni, 44 ppm Co, 398 ppm Cr and 3.6 ppb Pt** (see following slide)
- Geochemical anomalies are closely related to mafic and ultramafic rocks on the property
- Several electromagnetic anomalies (EM conductors) occurring along stratigraphic trend from these anomalies





TSX-V: SKYG

US: SRKZF

GEOLOGY LEGEND

- 5 - Mafic to intermediate metavolcanic rocks
- 6 - Felsic to intermediate metavolcanic rocks
- 7 - Metasedimentary rocks
- 9 - Coarse clastic metasedimentary rocks
- 10 - Mafic and ultramafic rocks
- 11 - Gneissic tonalite suite
- 12 - Foliated tonalite suite
- 14 - Diorite-monzondiorite-granodiorite suite
- 15 - Massive granodiorite to granite

5km

SUNGOLD CU ZN-AG
VMX PROSPECT

HAMLIN CU-AU
IOCG PROSPECT

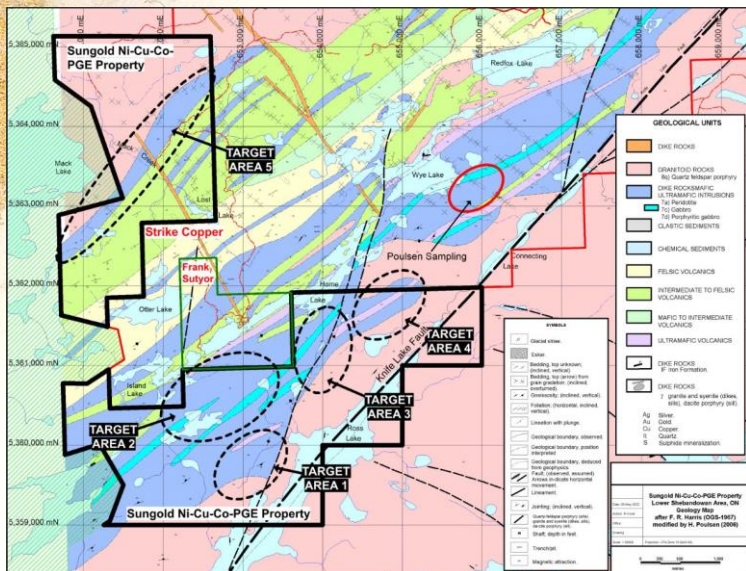
SUNGOLD
PROPERTY

The Sungold property exhibits striking similarities with the geologic setting of the past producing Shebandowan mine. At Sungold, an extensive mafic to ultramafic sill complex, forms the base of the greenstone belt, proximal to the crustal-scale Knife Lake Fault. The ultramafic rocks comprising the sill complex are strongly serpentinized, characterized by the presence of magnetite and talc. **These altered ultramafic bodies, are reflected by the presence of linear magnetic highs, similar to what is seen at Shebandowan.** Additionally, the chemistry of the ultramafic rocks is identical to that of the host rocks at the Shebandowan mine, in terms of MgO content (komatiites).



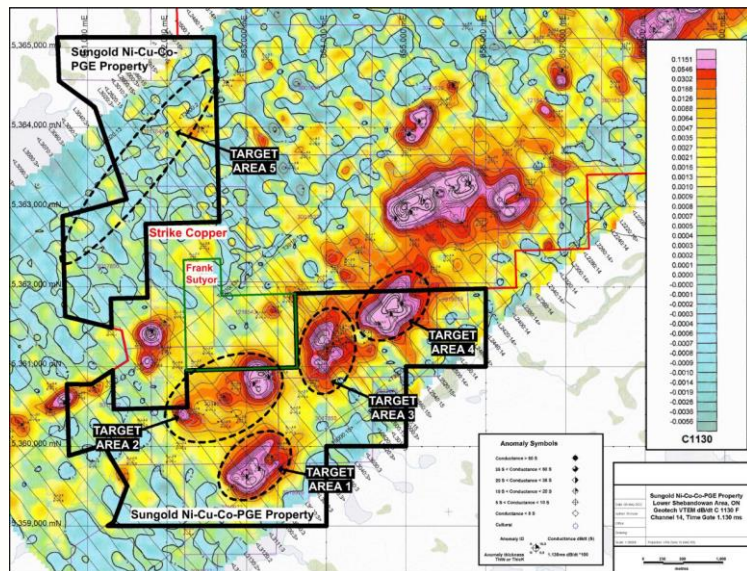
TSX-V: SKYG

US: SRKZF



Mafic & Ultramafic Rocks on the Sungold Property

4 priority Ni-Cu-Co-PGE target areas have been identified, all characterized by the presence of ultramafic rocks proximal to the crustal-scale Knife Lake fault



Conductors on the Sungold Property

Such ultramafic rocks are intimately associated with strong conductors (red and magenta colours) identified by an airborne geophysical survey (VTEM)



DELTA HALO

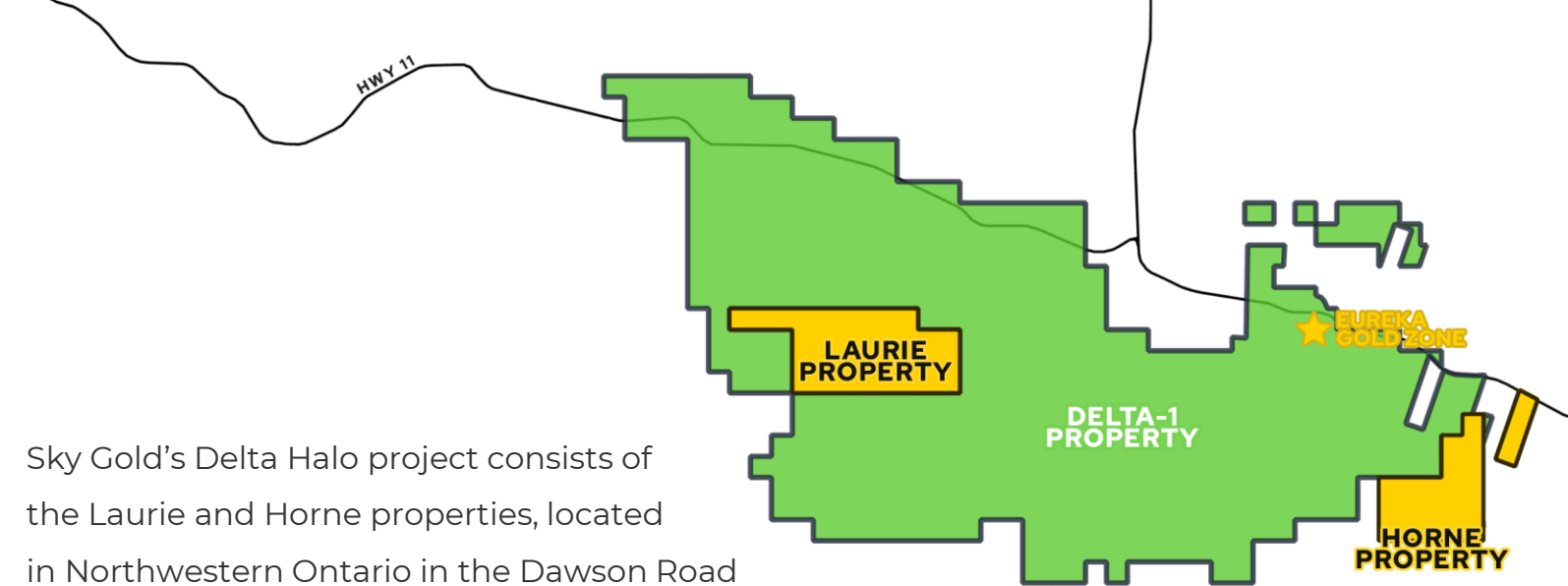
NORTHWEST ONTARIO, CANADA



TSX-V: **SKYG** US: **SRKZF**

Sky Gold's Delta Halo project consists of the Laurie and Horne properties, located in Northwestern Ontario in the Dawson Road Lots, straddling the Trans-Canada highway approximately 50km west of Thunder Bay.

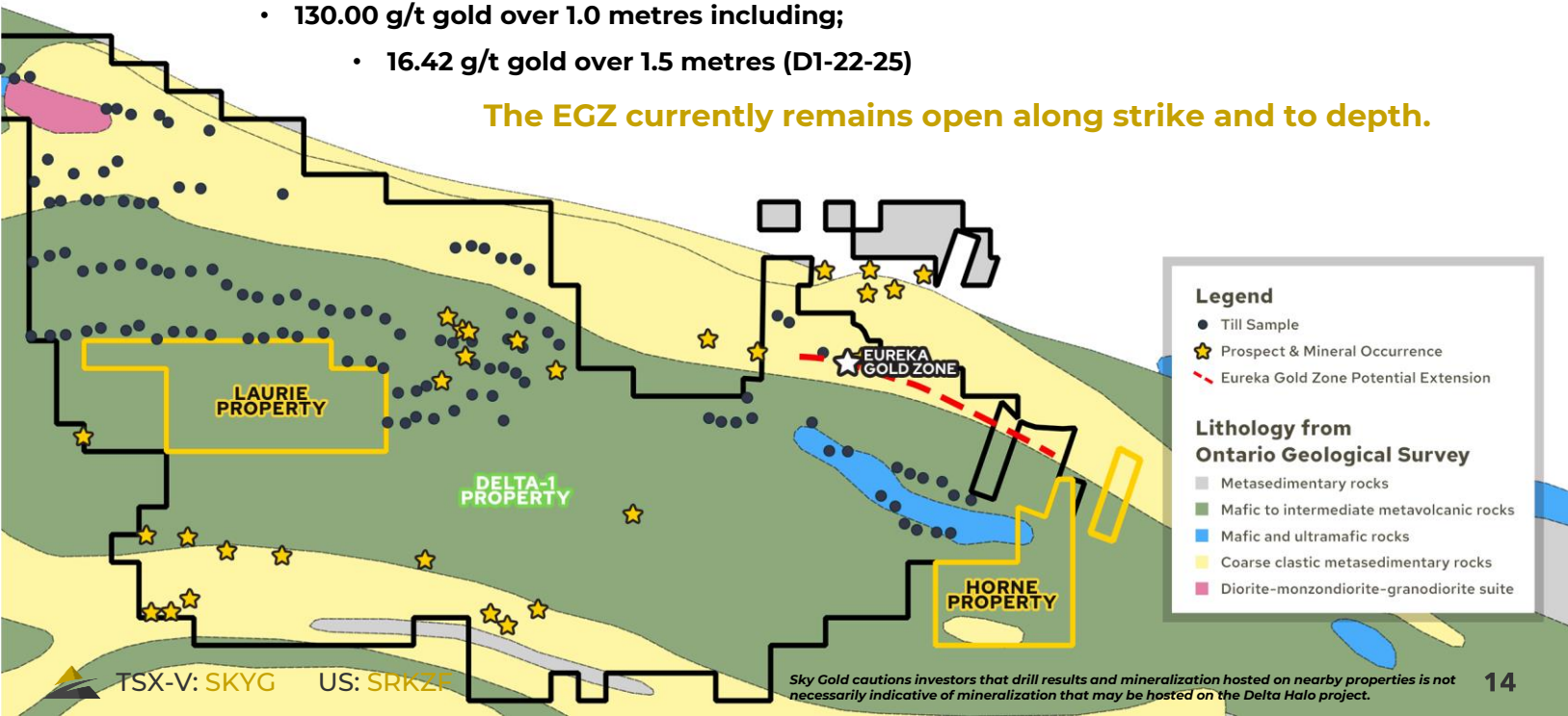
Both properties border the Eureka Gold Zone (EGZ) currently being drilled by Delta Resources Ltd. (TSXV: DLTA).

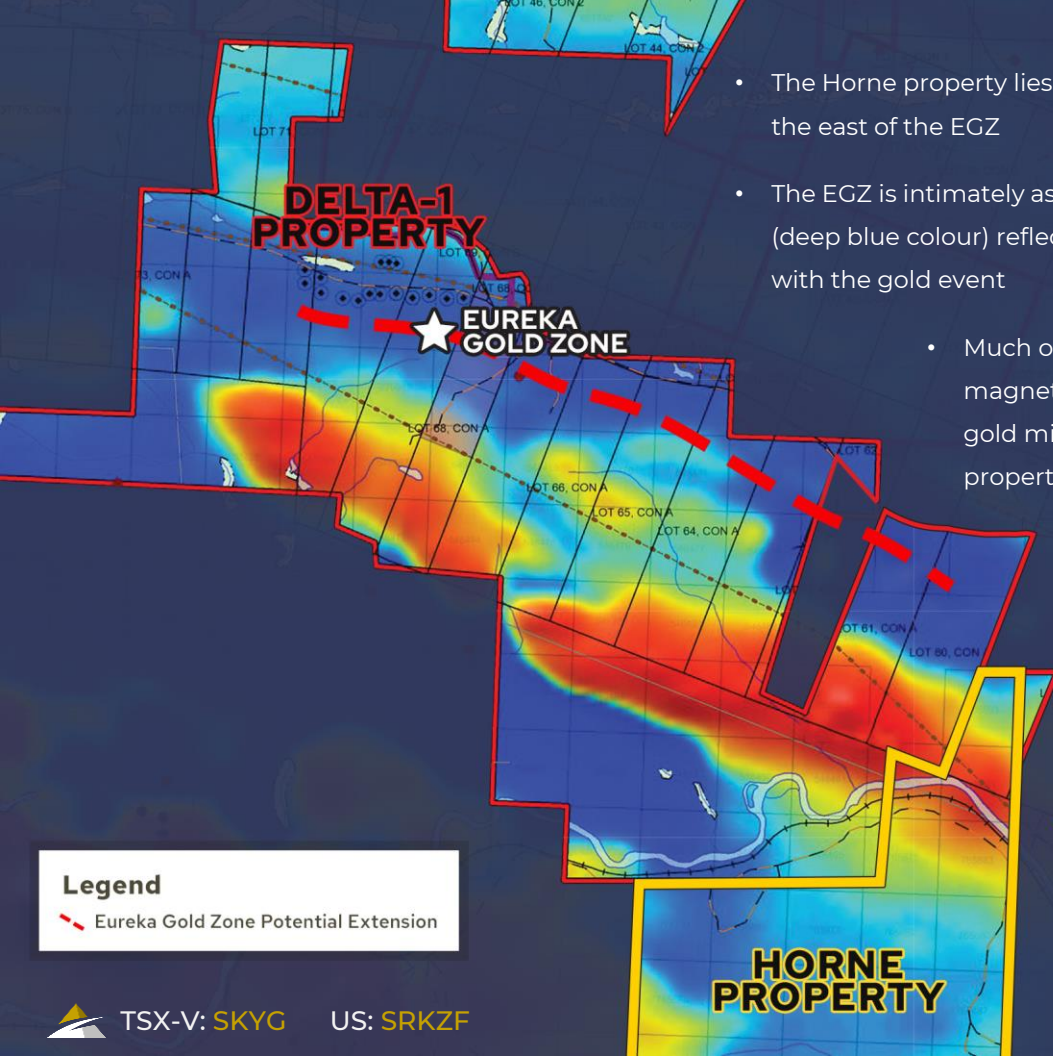


Delta Resources has traced the EGZ by diamond drilling over a minimum strike-length of 1.4 kilometres and to a vertical depth of approximately 220 metres. Highlight intercepts from the EGZ include:

- 14.80 g/t gold over 11.9 metres (D1-22-18)
 - 6.49 g/t gold over 10.0 metres (D1-22-24)
 - 130.00 g/t gold over 1.0 metres including;
 - 16.42 g/t gold over 1.5 metres (D1-22-25)

The EGZ currently remains open along strike and to depth.





- The Horne property lies along structural and stratigraphic trend to the east of the EGZ
- The EGZ is intimately associated with a prominent magnetic low (deep blue colour) reflecting hydrothermal alteration associated with the gold event
- Much of the Horne property has a similar magnetic low suggesting that a similar style of gold mineralization may occur on the Horne property
- Supplementing the magnetic low on the Horne property is a single sample site returning 13 particulate gold grains, the same survey that led to the EGZ discovery

Legend

- Eureka Gold Zone Potential Extension

Detailed till sampling is required to better define the gold anomaly.



TSX-V: **SKYG**

US: **SRKZF**

**HORNE
PROPERTY**



The map shows the Delta-1 property in green and the Laurie property in yellow. Gold occurrences are marked with star-in-a-circle icons and labeled: KASPER, CREEK, SOUTH, and WEDGE. A compass rose and a 2 km scale bar are in the top right. The background is a topographic map with contour lines and some roads like Highway 101 and Highway 100.

**DELTA-1
PROPERTY**

**LAURIE
PROPERTY**

KASPER

CREEK

SOUTH

WEDGE

The Laurie property is contiguous with the south boundary of the Delta-1 property. It lies along stratigraphic trend to the west of several gold showings, including the **South, Creek, Kasper and Wedge occurrences**.


The property is cross-cut by a number of prominent ENE-trending structures (060 degrees). Such structures appear to be one of the primary controls on gold mineralization within the Shebandowan greenstone belt, including at the EGZ, where they intersect crustal-scale faults, trending to the east and east-southeast.



TSX-V: **SKYG**

US: **SRKZF**

Sky Gold cautions investors that drill results and mineralization hosted on nearby properties is not necessarily indicative of mineralization that may be hosted on the Delta Halo project.



Sky Gold holds additional properties throughout North America:

NEWFOUNDLAND GOLD

NEWFOUNDLAND, CANADA

The Mustang and Virginia properties cover 1,650 hectares and are both contiguous to New Found Gold's (TSX-V: NFG) flagship Queensway Gold project.

EVENING STAR

MINERAL COUNTY, NEVADA

The Evening Star property is located in west central Nevada in Mineral County and is comprised of 43 unpatented mineral lode claims totaling 660 acres.

Management & Directors

Mike England

CEO & Director

Mr. England has been involved in the public markets since 1983 in various roles, including investor relations, directorships and senior officer positions. To date, Mr. England has been directly responsible for raising in excess of \$60-million for mineral exploration and acquisitions.

Don McKinnon Jr.

Director

Mr. McKinnon has been involved in the mining exploration industry since a very young age. Son of Don McKinnon Sr., of Hemlo fame, Mr. McKinnon has been explored mining properties in Ontario and internationally. Mr. McKinnon also has an extensive network of business associates throughout Canada and internationally.

Aaron McBreairty, B.A, B.Sc, G.I.T

Director

Aaron is a geologist with over nine years of experience in mineral exploration and project management, including recently as project manager for the Red Lake Cole Gold Project in Ontario and the Mustang Project in the Queensway area of Newfoundland and Labrador.

J.C. St-Amour

Director

Mr. St-Amour has over 20 years of mining industry experience in corporate finance and mergers & acquisitions. He has a master's degree in geology and is a Chartered Financial Analyst with strengths and expertise in capital markets, financial and investment analysis, asset valuation and due diligence.

Leon Ho

CFO

Mr. Ho is a chartered professional accountant working at Cross Davis & Company LLP, a chartered professional accountant firm providing accounting services to publicly listed entities, primarily in the mining sector.



Advisory — Board

Robert Weicker
Chief Geologist

Bruce Durham
Advisor

Garry Clark, P.Geo
Advisor & QP

Garry Rayner
Advisor

Catherine Fitzgerald, M.Sc, P.Geo
Advisor

Mackenzie Watson, B.Sc, P.Eng
Advisor

Donald Hoy, B.Sc
Advisor

Share

— Structure

43,292,191

SHARES OUTSTANDING

11,314,445

WARRANTS

2,900,000

OPTIONS

57,506,636

FULLY DILUTED





TSX-V: SKYC US: SRKZF

Sky Gold Corp.

1240-789 W Pender St.

Vancouver, BC, V6C 1H2

 **604-683-3995**

 **1-888-945-4770**

 **info@skygoldcorp.com**

skygoldcorp.com

Connect With Us



@skygoldcorp

Disclaimer

This presentation is strictly confidential and any disclosure, use, copying and circulation of this presentation is prohibited without the consent of Sky Gold Corp ("the Company").

The information contained in this presentation does not constitute or form part of, and should not be construed as, an offer or invitation to subscribe for or purchase the securities discussed herein in any jurisdiction. Neither this presentation nor any part of it shall form the basis of, or be relied upon in connection with any offer, or act as an inducement to enter into any contract or commitment whatsoever. No representation or warranty is given, express or implied, as to the accuracy of the information contained in this presentation.

This presentation contains certain forward-looking statements relating to the business, financial performance and results of the Company and/or the industry in which it operates. Forward-looking statements concern future circumstances and results and other statements that are not historical facts. The forward-looking statements, contained in this presentation, including assumptions, opinions and views of the Company or cited from third party sources are solely opinions and forecasts which are uncertain and subject to risks. A multitude of factors can cause actual events to differ significantly from any anticipated development. Neither the Company nor any such person's, officers or employees guarantee that the assumptions underlying such forward-looking statements are free from errors and omissions nor do any of them accept any responsibility for the future accuracy of the opinions expressed in this presentation or the actual occurrence of the forecasted developments.

The information contained herein has been prepared to assist the recipients in making their own evaluation on the Company and does not purport to contain all information that they may desire. In all cases, the recipients should conduct their own investigation and analysis of the Company, its business, prospects, results of operations and financial condition as well as any other information the recipients may deem relevant.

The Company does not make any representation or warranty, express or implied, as to the accuracy or completeness of this presentation or of the information contained herein and shall have no liability for the information contained in, or any omissions from, this presentation, nor for any of the written, electronic or oral communications transmitted to the recipients (including without limitation its directors, employees, representatives and advisors).

Neither the receipt of this presentation by any recipients, nor any information contained herein or supplied herewith or subsequently communicated in written, electronic or oral form to any person in connection with the contemplated issue of shares in the Company constitutes, or shall be relied upon as constituting, the giving of investment advice to any such person. Each person should make their own independent assessment of the merits of investing in the Company and should consult their own professional advisors. By receiving this Presentation, you acknowledge and agree that you will be solely responsible for your own assessment of the market and the market position of the Company and that you will conduct your own analysis and are solely responsible for forming your own opinion of the potential future performance of the Company's business.

