



The Evening Star Project

Mineral County, Nevada



DISCLAIMER

This presentation is strictly confidential and any disclosure, use, copying and circulation of this presentation is prohibited without the consent of Sky Gold Corp (“the Company”).

The information contained in this presentation does not constitute or form part of, and should not be construed as, an offer or invitation to subscribe for or purchase the securities discussed herein in any jurisdiction. Neither this presentation nor any part of it shall form the basis of, or be relied upon in connection with any offer, or act as an inducement to enter into any contract or commitment whatsoever. No representation or warranty is given, express or implied, as to the accuracy of the information contained in this presentation.

This presentation contains certain forward-looking statements relating to the business, financial performance and results of the Company and/or the industry in which it operates. Forward-looking statements concern future circumstances and results and other statements that are not historical facts. The forward-looking statements, contained in this presentation, including assumptions, opinions and views of the Company or cited from third party sources are solely opinions and forecasts which are uncertain and subject to risks. A multitude of factors can cause actual events to differ significantly from any anticipated development. Neither the Company nor any such person’s, officers or employees guarantee that the assumptions underlying such forward-looking statements are free from errors and omissions nor do any of them accept any responsibility for the future accuracy of the opinions expressed in this presentation or the actual occurrence of the forecasted developments.

The information contained herein has been prepared to assist the recipients in making their own evaluation on the Company and does not purport to contain all information that they may desire. In all cases, the recipients should conduct their own

investigation and analysis of the Company, its business, prospects, results of operations and financial condition as well as any other information the recipients may deem relevant.

The Company does not make any representation or warranty, express or implied, as to the accuracy or completeness of this presentation or of the information contained herein and shall have no liability for the information contained in, or any omissions from, this presentation, nor for any of the written, electronic or oral communications transmitted to the recipients (including without limitation its directors, employees, representatives and advisors).

Neither the receipt of this presentation by any recipients, nor any information contained herein or supplied herewith or subsequently communicated in written, electronic or oral form to any person in connection with the contemplated issue of shares in the Company constitutes, or shall be relied upon as constituting, the giving of investment advice to any such person. Each person should make their own independent assessment of the merits of investing in the Company and should consult their own professional advisors. By receiving this Presentation, you acknowledge and agree that you will be solely responsible for your own assessment of the market and the market position of the Company and that you will conduct your own analysis and are solely responsible for forming your own opinion of the potential future performance of the Company’s business.

Sky Gold Corp.’s disclosure of a technical or scientific nature in this presentation has been reviewed and approved by Danae Voormeij, M.Sc., P.Geo., who serves as a qualified person under the definition of National Instrument 43-101.

The Evening Star Property is in the Walker Lake Gold trend of Nevada

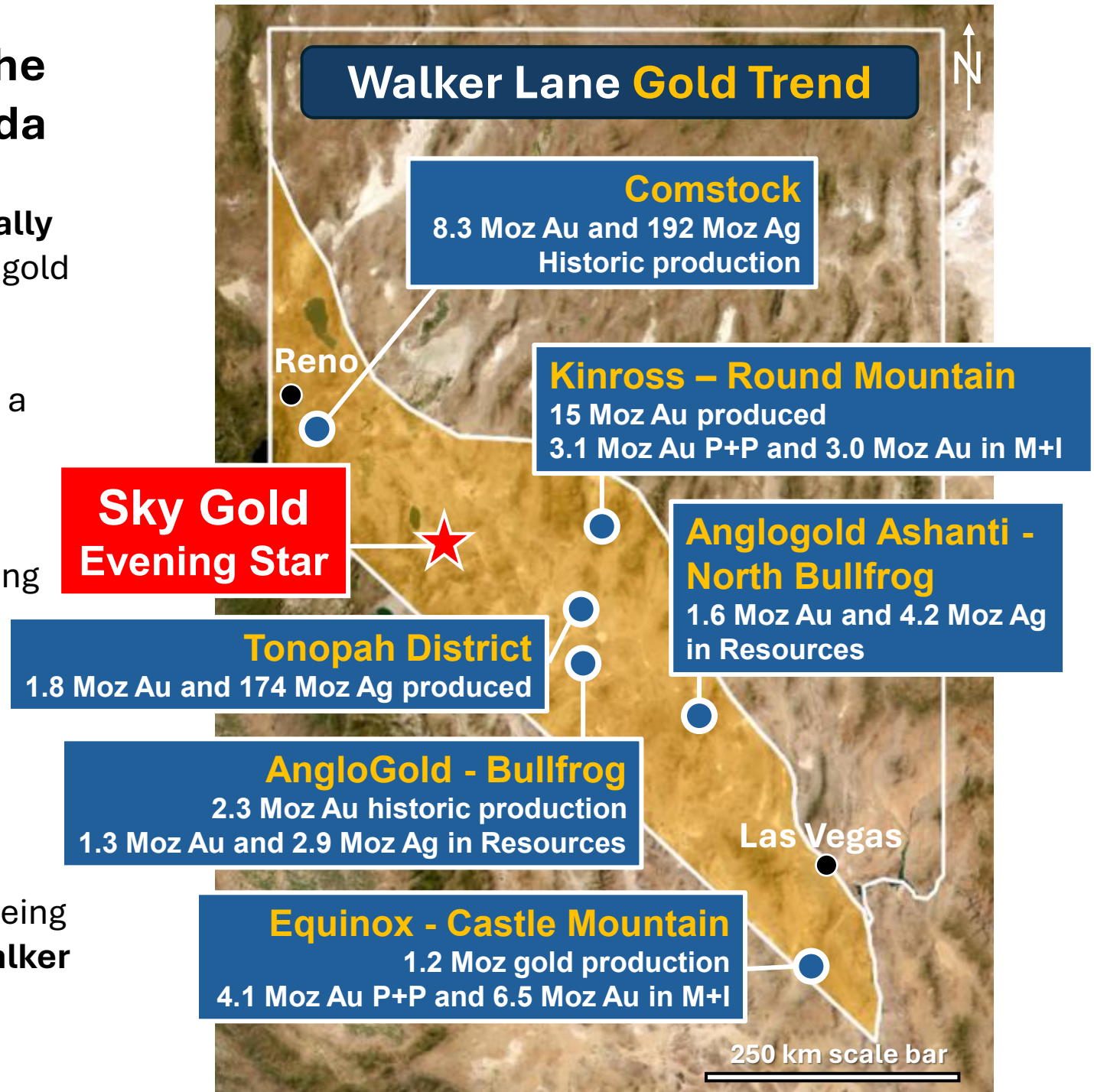
Sky Gold's Evening Star Property is **strategically located** in Nevada's Walker Lane epithermal gold and silver vein district.

Nevada is a **mining-friendly** jurisdiction with a significant gold and silver mining history.

Fraser Institute (2025 Survey) **ranks Nevada second in the world** for exploration and mining development.

The Walker Lane Gold Trend is **an emerging gold and silver epithermal belt** with large gold and silver deposits that remains underexplored.

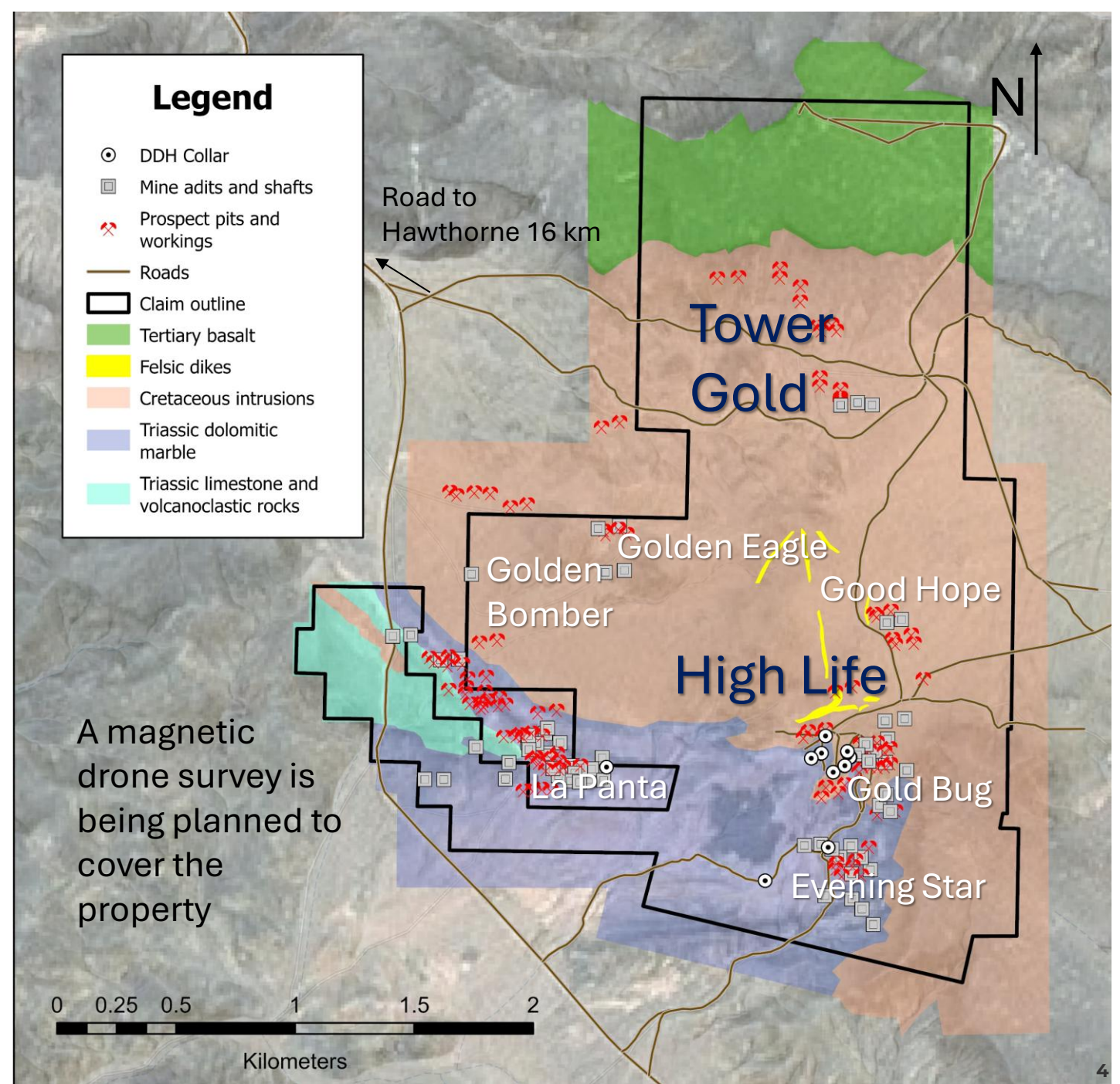
New deposits of gold and silver are actively being discovered, **with majors moving into the Walker Lane gold district** to commence mining.



Evening Star Property Map



Bonanza-grade gold in quartz veins at Gold Bug



Tower Gold

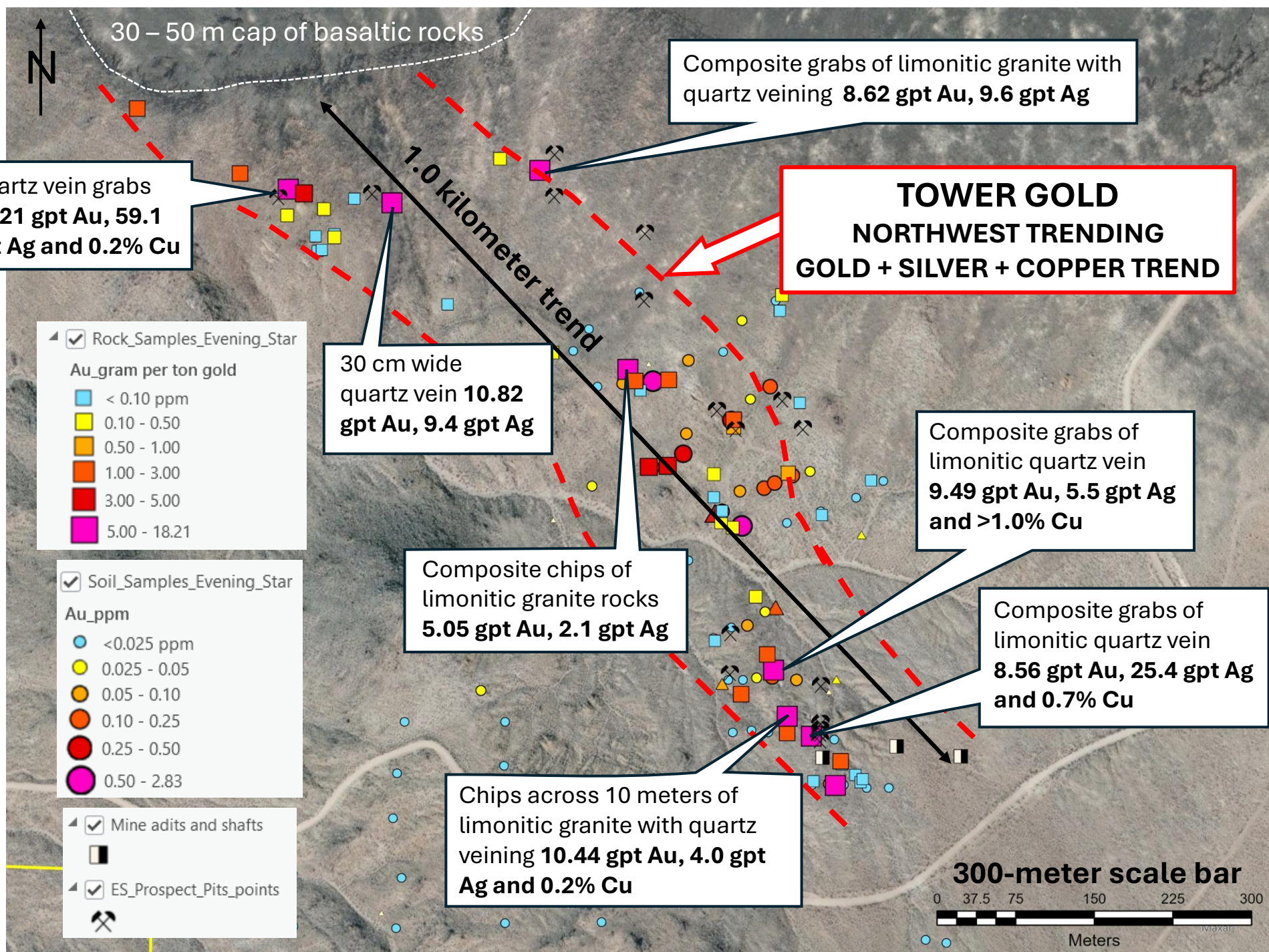
One kilometer of gold + silver + copper mineralization in a northwest trend.

Limonitic granite rocks with quartz veining returned high-grade gold and silver results (see NR Nov 30, 2021).

Mineralized zones 5 to 10 meters in width.

Open on both ends.

There are numerous historic gold mine adits and vein workings in this gold trend.



Tower Gold - Veins

View to North

Tertiary basalt rocks

Granite

At Tower Gold, high-grade gold, silver and copper is found in quartz veins and wall rocks.

Veins are mostly Northwest trending and northeast dipping.

Host rocks are strongly pyrite and sericite-altered intrusive granite rocks that carry grade.

The gold corridor is one kilometer long by 200 meters wide.



Examples of extensional quartz vein arrays that are hosted in strongly FeOx (pyrite) and sericite-altered granite rocks at Tower Gold.

Tower Gold - Drilling

1500 meters of diamond core drilling is proposed for the South half of the Tower Gold trend. Holes will be 100-150m length. Drilling is fully permitted.

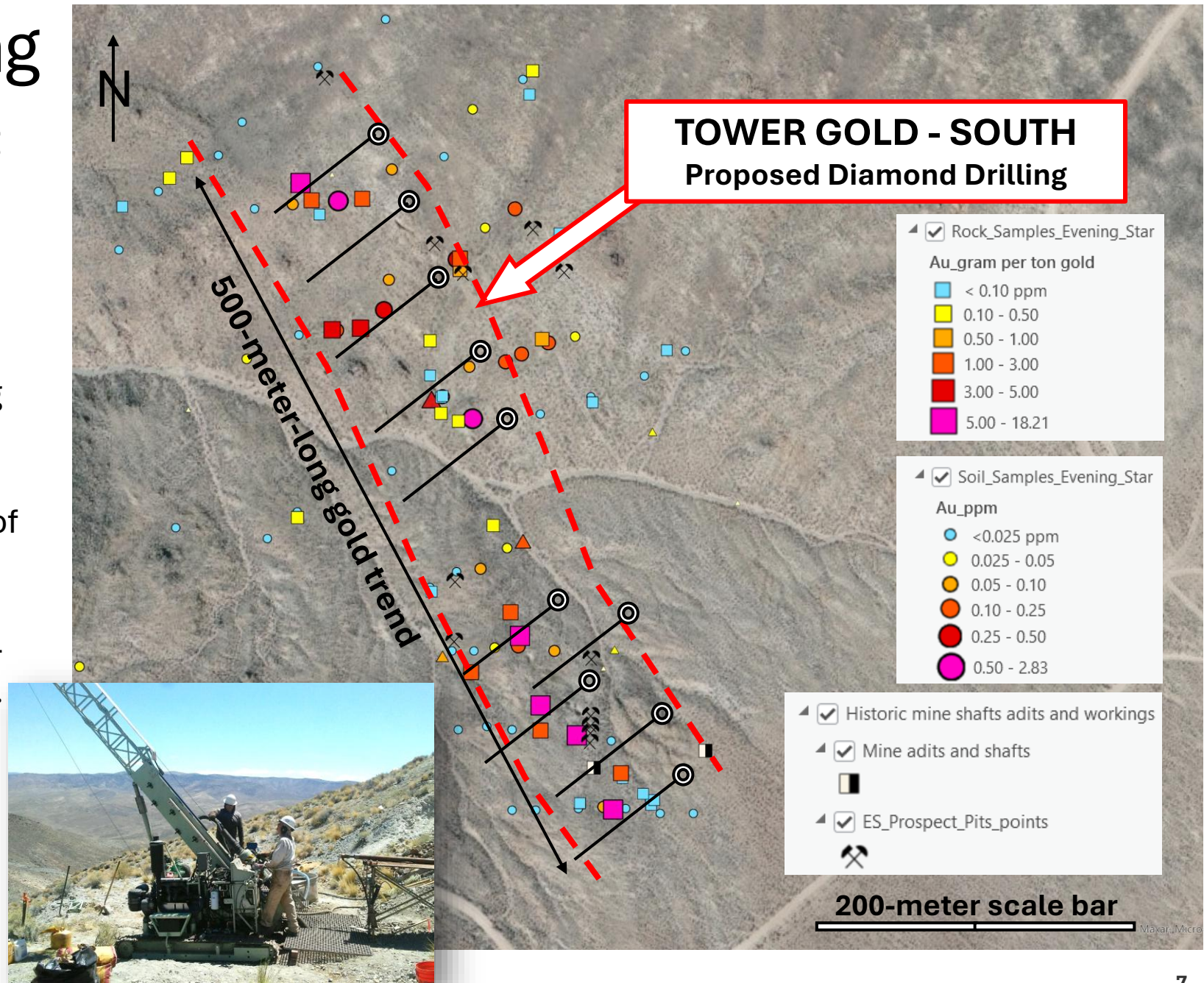
Targeting high-grade gold, silver and copper mineralization in quartz veining and in intrusive granite host rocks.

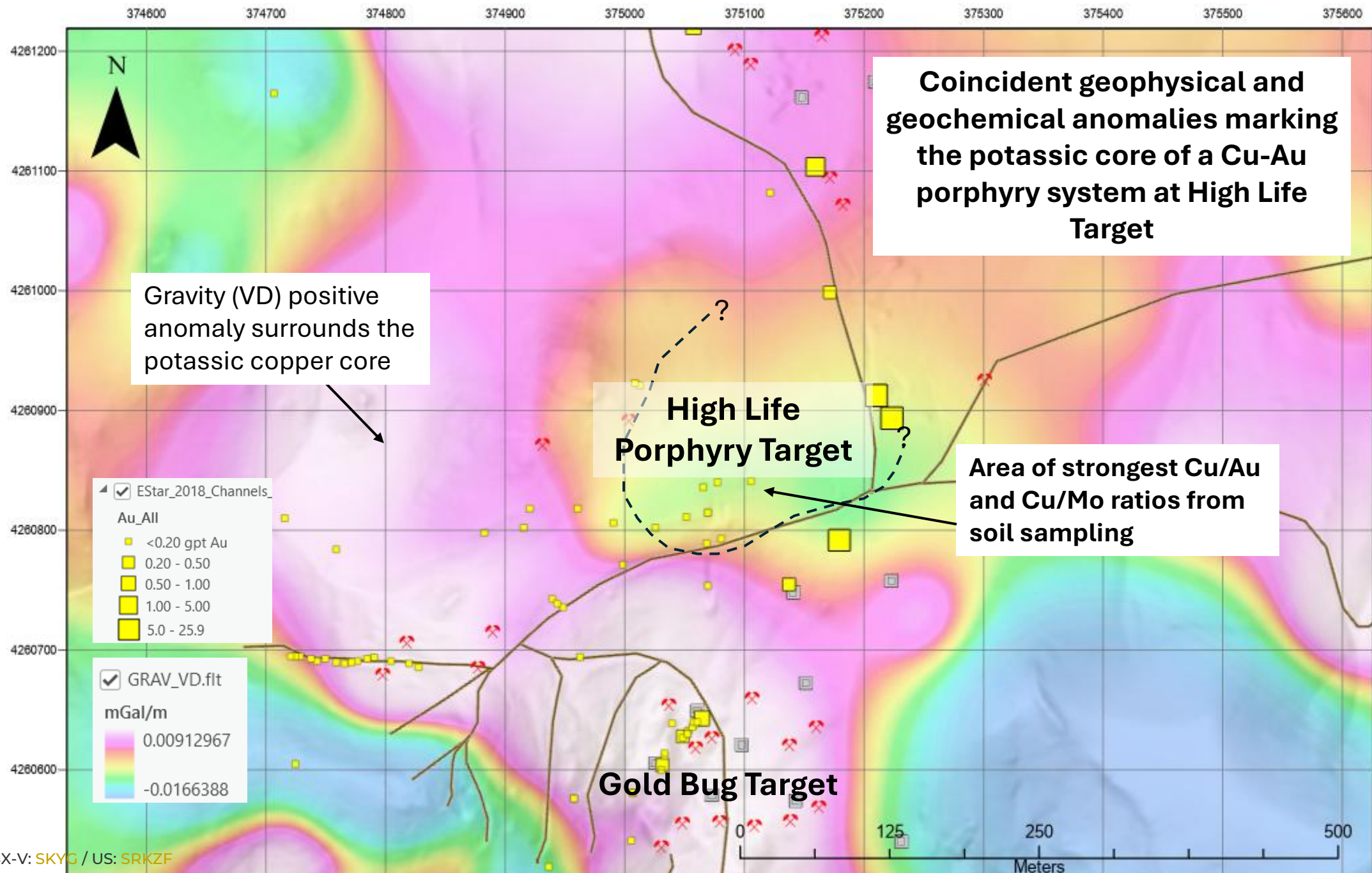
Drilling will test for gold grades, width of the zone and continuity along strike.

Fully permitted for drilling. Diamond-core drill is secured to start in October.

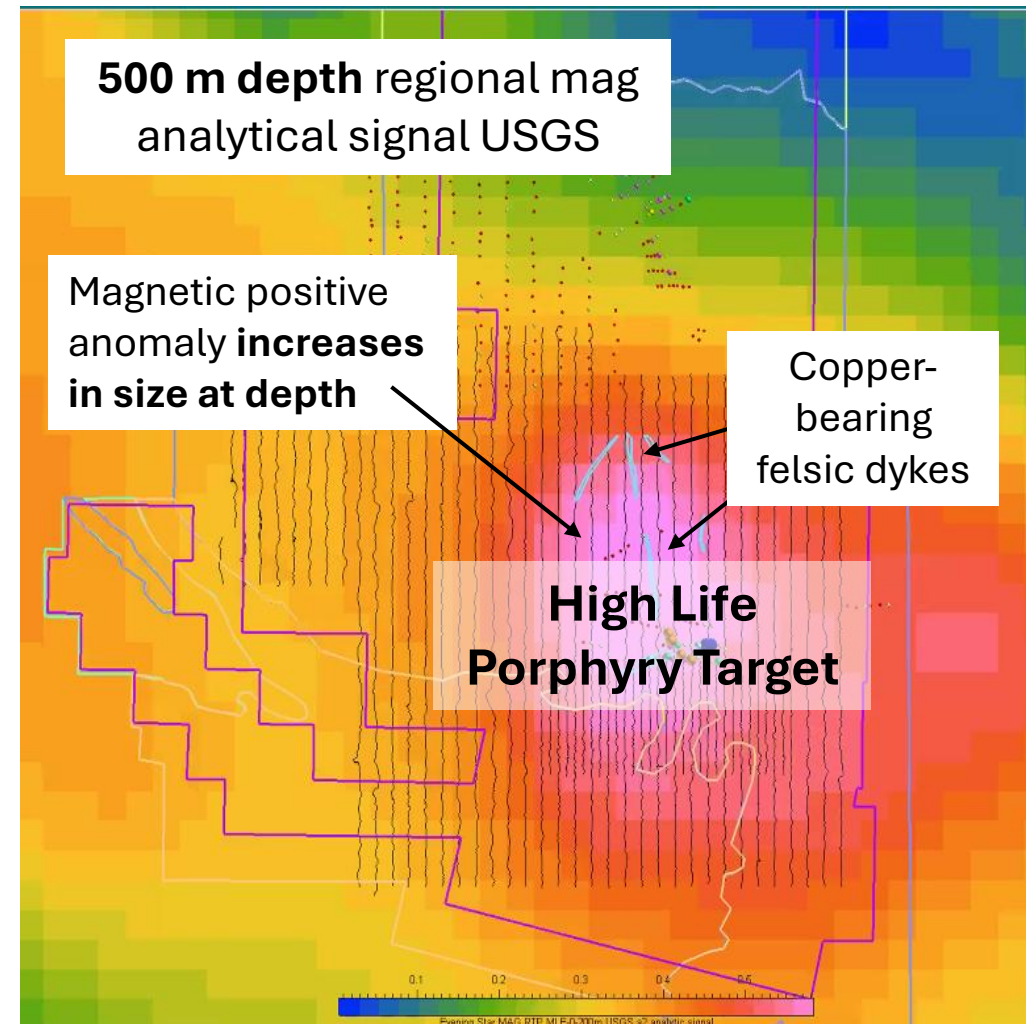
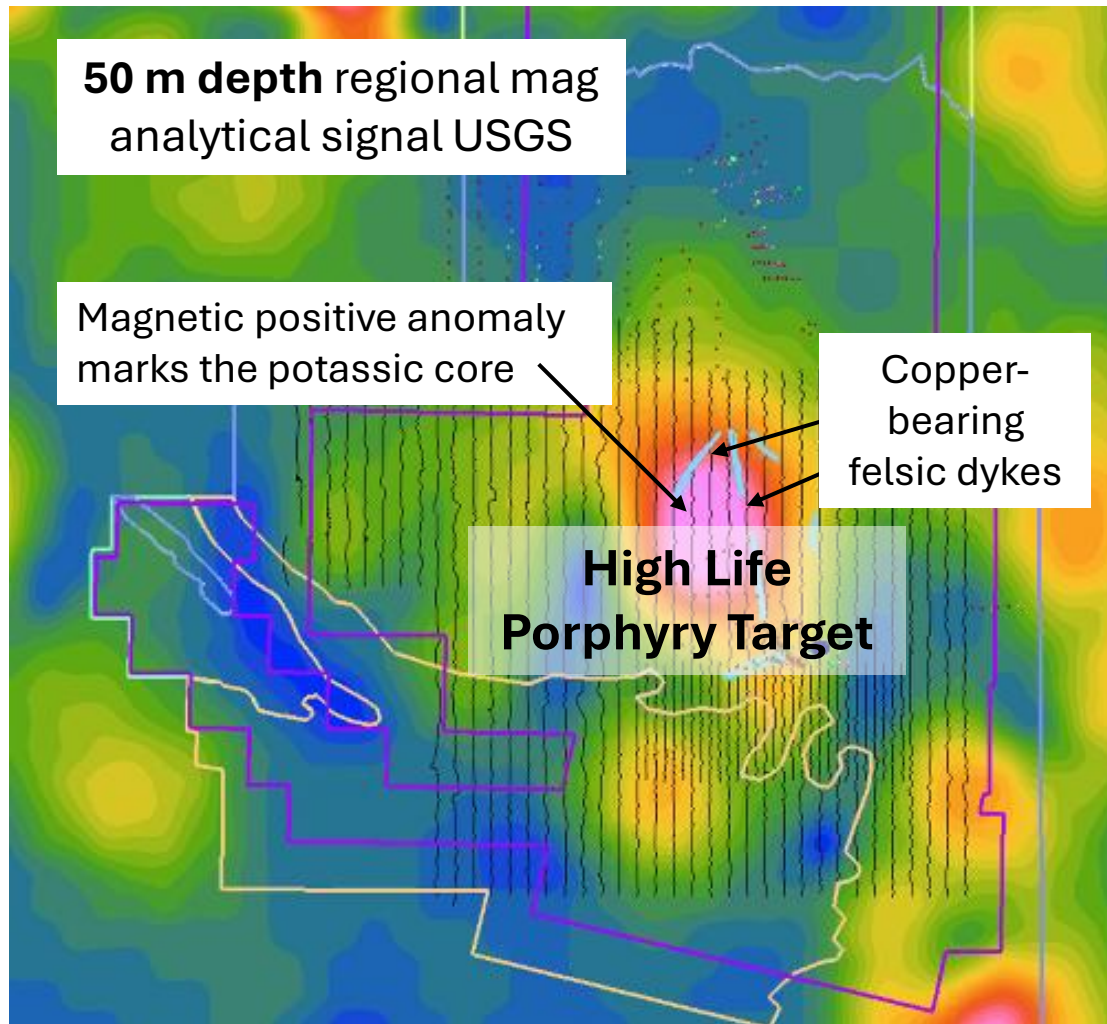
Tower Gold has never been drilled.

There is easy road access and flat terrain for track-mounted drilling.





High Life Target: Regional magnetic survey marks the potassic core of a porphyry system



Mike England

CEO & Director

Mr. England has been involved in the public markets since 1983 in various roles, including investor relations, directorships and senior officer positions. To date, Mr. England has been directly responsible for raising in excess of \$80-million for mineral exploration and acquisitions.

Don McKinnon Jr.

CEO & Director

Mr. McKinnon has been involved in the mining exploration industry since a very young age. Son of Don McKinnon Sr., of Hemlo fame, Mr. McKinnon has been explored mining properties in Ontario and internationally. Mr. McKinnon also has an extensive network of business associates throughout Canada and internationally.

Danae Voormeij

Director

Danae Voormeij is an exploration geologist with over twenty years of hands-on experience exploring for gold and copper in Africa, South Pacific and the Americas. She led the geological team that discovered a multi-million-ounce gold deposit at Dugbe, in Liberia, West Africa, for AIM-listed Hummingbird Resources, and she is a board member with Miata Metals.

J.C. St-Amour

Director

Mr. St-Amour has over 20 years of mining industry experience in corporate finance and mergers & acquisitions. He has a master's degree in geology and is a Chartered Financial Analyst with strengths and expertise in capital markets, financial and investment analysis, asset valuation and due diligence.

Leon Ho

CFO

Mr. Ho is a chartered professional accountant working at Cross Davis & Company LLP, a chartered professional accountant firm providing accounting services to publicly listed entities, primarily in the mining sector.

Mackenzie Watson

Advisor

Mr. Watson, B.Sc., P.Eng., has over 50 years of experience in exploration, finance, development, and operations in the mining industry. Mr. Watson has spent his career in the junior mining sector, notably serving as Chief Executive Officer (CEO) of Lynx Canada Exploration Ltd. until 1985 and as Chief Executive Officer of Freewest Resources Inc. commencing in 1985, until its acquisition by Noranda in 1994. He was then CEO of Freewest Resources Canada Inc until its acquisition by Cliffs Natural Resources in 2010. Among his many achievements, Mr. Watson was awarded the Prospectors and Developers of Canada's Bill Dennis award in 1991 for his contribution in the discovery of the Harker Holloway gold mine (Ontario), the Icon-Sullivan copper mine (Quebec), the Long Lake zinc mine (Ontario), the Ellison gold deposit (Quebec) and the Hebecourt copper deposit (Quebec) and again in 2010, for his contributions to the mineral discoveries in the Ring of Fire area in Northern Ontario. Mr. Watson is also the first person to have received the Bill Dennis Award for a Canadian Discovery and/or prospecting success twice: a first time in 1991 for numerous discoveries; and again in 2009, as part of the team responsible for chromite discoveries in the Ring of Fire. He was also awarded the Quebec Prospector of the Year Award in 1992, for his participation in the discovery of the Pusticamica and Verneuil gold deposits in Quebec. In January 2015, Mr. Watson was inducted into the Canadian Mining Hall of Fame.

John Duncan

Advisor

John Duncan has an M.S. Degree in Economic Geology from the University of Arizona and nearly forty years' experience in mineral exploration and mine geology. With expertise in precious and base metals and industrial minerals, Mr. Duncan has engaged in exploration throughout the Americas, from project generation and greenfields exploration to advanced development and mine work. He has long-term consulting relationships with Rio Tinto Borates and the KGHM Robinson Mine. Mr. Duncan resides in Nevada.

Robert Weicker

Chief Geologist

Bob's 5 year stint at Hemlo included the role of Chief Geologist at the Williams Mine (at the time, the largest gold mine in Canada) for Lac Minerals Ltd., and was with the project from late exploration, through development and construction, to production at 6000 tonnes per day. Bob also has extensive exploration experience in the Hemlo, Thunder Bay area, and Abitibi greenstone belts, for gold and VMS (Volcanogenic massive sulphide) deposits. In the USA, Bob was with Equinox Resources Ltd. (taken over by Hecla Mining Company) and involved with the exploration, permitting and underground development of the Rosebud gold deposit in Pershing County Nevada, which was successfully mined by Hecla and Newmont. Bob has worked on projects in every county in Nevada, in addition to Arizona, Utah, Idaho, Washington, New Mexico and California.

55,002,191
SHARES OUTSTANDING

12,706,667
WARRANTS

5,400,000
OPTIONS

73,108,858
FULLY DILUTED



TSX-V: SKYG US: SRKZF

Sky Gold Corp.
1240-789 W Pender St.
Vancouver, BC, V6C 1H2

604-683-3995
1-888-945-4770
info@skygoldcorp.com
Skygoldcorp.com